



Welcome

We are delighted to welcome the visiting teams and their supporters to Stamford as we host the U11 IAPS Rugby Tournament.

We hope that everyone enjoys a wonderful day here, and embraces the sporting values which underpin our sports program – one where enjoyment of the experience is generated through growth, challenge and reward.

The ethos of sport at Stamford Schools is to give children a healthy attitude to physical activity throughout his or her school career and, more importantly, for life.

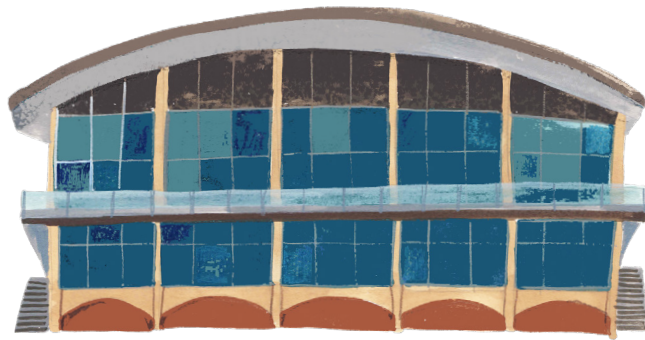
Most Saturdays we will have up to 23 Senior School rugby teams donning their school colours to represent Stamford, with a further 15 teams from the Junior School.

As we are keen to remind our young Stamfordians, remember that the biggest element of competition is not with the opposition, rather with oneself in terms of personal performances and measuring progress.

Finally, remember to celebrate the sense of belonging that sport has a unique ability to foster thorough participation and representation.

Have a fantastic day.

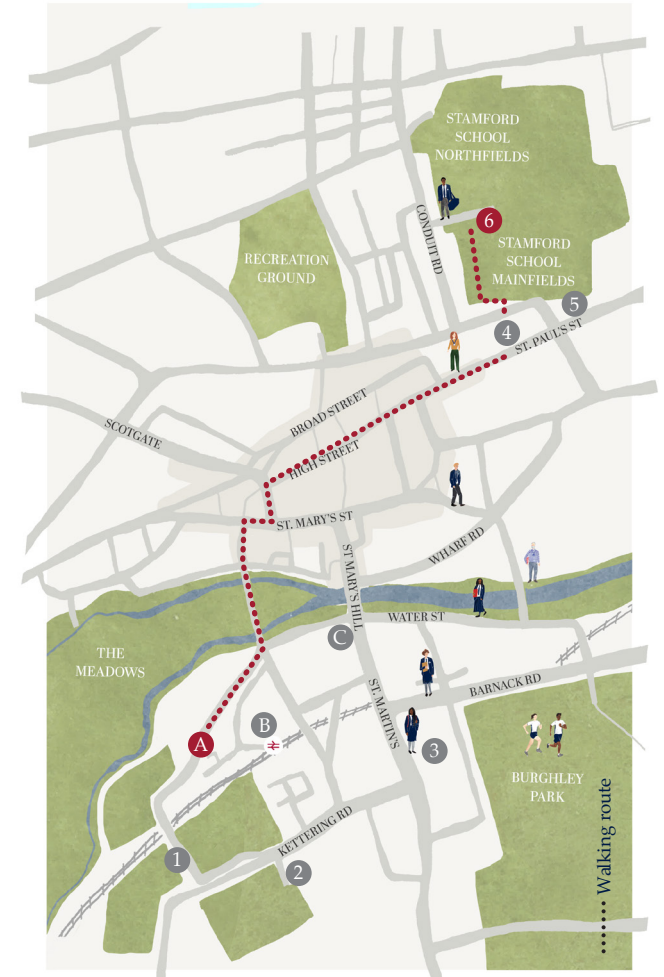
Mark Nasey
Director of Sport



Stamford *Senior School* IAPS U11 Rugby Friday 15 November 2024

St Pauls Site

Southfields House, Stamford PE9 2BQ



1. Kettering Road - Stamford Junior School
 2. Wothorpe Sports Centre
 3. St Martin's - Sixth Form
 4. St Paul's - Senior School
 5. Southfields - Main Reception, Visitor Parking and Student Drop Off
 6. **Memorial Sports Centre and Swimming Pool**
- A. Nursery/Cattle Market Car Park (main car park)
B. Stamford Train Station
C. The George Hotel

GAME DAY DETAILS:

SCORING:

3 points for a win

1 for a draw

REFEREEING:

Schools will referee their own games.

PUBLIC PARKING:

Parking is limited. Please park in town where possible.

MINI BUS/COACHES:

Mini Buses and Coaches should drop off and collect from the layby beside the pitches - PE9 1QQ.

MATCH TEAS:

Scoreboard Cafe will be open.

FACILITIES:

Toilets are available at the rear of the Cricket Pavilion adjacent to the rugby pitches.

SCHOOL TEAMS:

| | POOL 1 | | POOL 2 |
|----|--|----|--|
| A1 | Stamford Junior School | B1 | Bishop's Stortford College Prep School |
| A2 | Milton Keynes Perparatory School | B2 | St Faith's School |
| A3 | Stephen Perse Foundation - Dame Bradbury's | B3 | St John's College School |
| A4 | The Perse School - Prep | B4 | Laxton Junior School |
| A5 | Witham Hall School | B5 | King's College School |
| A6 | Heath Mount School | B6 | Spratton Hall |
| A7 | -- | B7 | St Hugh's School |

MATCHES:

| | Pitch 1 | Pitch 2 | Pitch 3 | Pitch 4 | Pitch 5 | Pitch 6 |
|-------|---------|---------|---------|---------|---------|---------|
| 11:00 | A1 - A2 | A3 - A4 | A5 - A6 | B1 - B2 | B3 - B4 | B5 - B6 |
| 11:20 | A1 - A7 | A2 - A3 | A4 - A5 | B1 - B7 | B2 - B3 | B4 - B5 |
| 11:40 | A6 - A7 | A1 - A3 | A2 - A4 | B6 - B7 | B1 - B3 | B2 - B4 |
| 12:00 | A5 - A7 | A1 - A4 | A3 - A6 | B5 - B7 | B1 - B4 | B3 - B6 |
| 12:20 | A2 - A5 | A4 - A7 | A1 - A6 | B2 - B5 | B4 - B7 | B1 - B6 |
| 12:40 | A3 - A5 | A4 - A6 | A2 - A7 | B3 - B5 | B4 - B6 | B2 - B7 |
| 13:00 | A2 - A6 | A3 - A7 | A1 - A5 | B2 - B6 | B3 - B7 | B1 - B5 |

MEMORIAL SPORTS CENTRE:



Main Field

1. Southfields House **SF** (Reception and Visitor Parking)
2. Brazenose House **B2**
3. Oswald Elliott Hall
4. Chapel
5. School House **H** (MFL,EAL, Library and Y9 Pastoral Space)
6. Atrium
7. LMS L (Y9 Pastoral Space)
8. Memorial Sports Centre and Swimming Pool **PE**
9. Sports Hall
10. Squash Courts
11. Northfields Astro
12. Cricket Pavilion
13. School Shop
14. Llowarch Performing Arts Centre for Drama **PA**
15. Llowarch Performing Arts Centre for Music **MT**
16. Medical Centre
17. Clapton C (Learning Development)
18. Richard Harris Art Centre **AR**
19. Gretton **G** (Design Technology)
20. Beaufort **B** (Mathematics)
21. Computing
22. Science Department and Observatory **SB, SC, SP**
23. St Paul's Boarding House
24. Byard Boarding House
25. Browne Boarding House
26. Tennis Courts
27. Netball Courts
28. Cricket Nets
29. Footbridge (all students must cross using the footbridge)
30. Bursary
31. Bus Stop
32. Student drop off / collection



STAMFORD SCHOOL

Visitor Parking

Stamford Town Centre:

Public Car Parks:

1. Cattle Market - PE9 2WB
2. Bath Row - PE9 2WE
3. Scotgate - PE9 2YE
4. North Street - PE9 1EG
5. St. Leonard's Street - PE9 2HX
6. Wharf Road - PE9 2EB

Stamford School Car Parks:

1. SJS Front of School - PE9 2LR
2. SJS Preschool - PE9 2WB
3. School House - PE9 1QF
4. Brazenose - PE9 2BE
5. LMS and Southfields- PE9 2BQ
6. The Dell - *Events only* - PE9 1UD
7. Memorial Sports Centre - PE9 1QQ
(Staff and Squash Club members only)

Stamford School Sites

- Kettering Road (Junior)
- Wothorpe Centre
- St. Paul's (Senior)
- St. Martin's (Sixth Form)

Local Landmarks

- Stamford Hospital

Main route between our sites

Memorial Sports Centre
PE9 1QQ

St Paul's Site - PE9 2BQ

St Martin's Site - PE9 2LL

Stamford Junior School
PE9 2LR

Wothorpe Sports Centre
PE9 2LR

It takes about 15 minutes to walk from the Junior School to Senior School Sports Centre and all paths are tarmacked.

